

# COOLMASTER *OffRoad*

## Fitting Instructions

Part Nº **49478K**



### Kit contains:

- Powder Coated Steel Bracket
- Support Bracket
- Extra Large High Flow Cooler
- 2 Cooler Fittings
- 2 Steel Lines
- Nut and Bolt Kit
- 8 Hose Clamps
- 4 300mm Cable Ties
- 2.5 meters Cooler Hose
- 2 meters Conduit
- 4 40mm Hose
- 2 P Clamps
- Instructions

### Quick mount for Isuzu D-MAX – MY21

1. Remove all covers, front grille, and bash plates where applicable. **(Pic 1 to 3)**



**Pic 1**



**Pic 2**

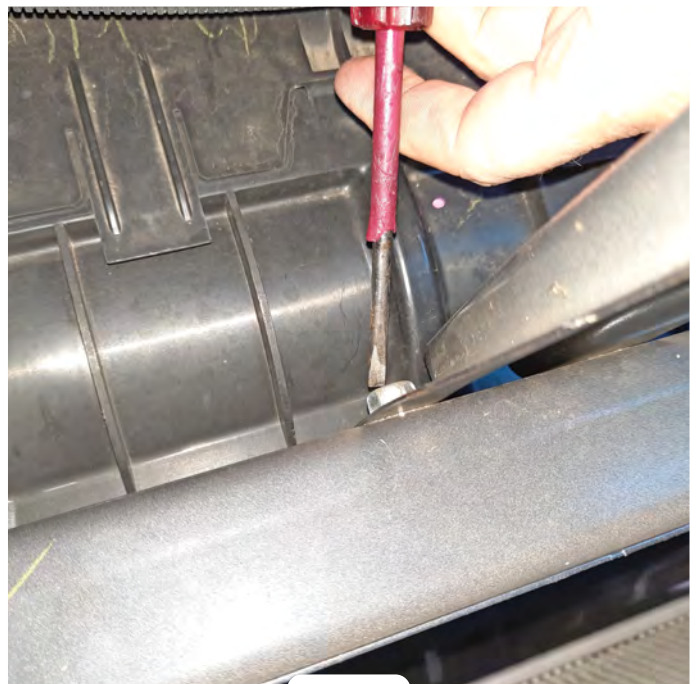


**Pic 3**

2. Unbolt the horn on the passenger's side of the vehicle and move to one side. **(Pic 4)**
3. Remove the bolt from the front support. **(Pic 5)**



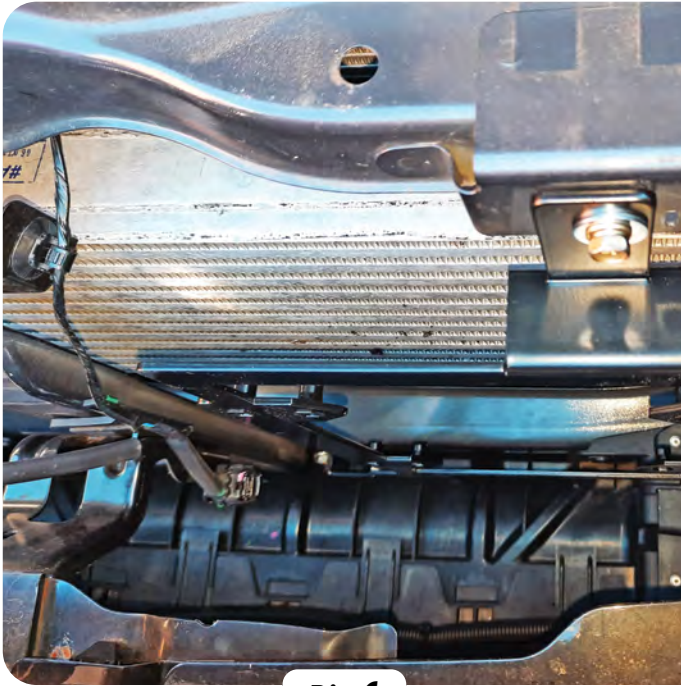
**Pic 4**



**Pic 5**



4. Install cooler bracket using mounting points left by removing horn and front support bolt. Reuse original bolts. **(Pic 6)**
5. Install steel cooler lines as shown, along the passenger side of the vehicle. **(Pic 7)**



**Pic 6**



**Pic 7**

6. Disconnect hoses from the heat exchanger and run to steel lines (trim as required). You also have the option of running in series if required. **(Pic 8)**

Use the small hose and clamps supplied to bypass the heat exchanger. **(Pic 9)**



**Pic 8**



**Pic 9**



7. Mount angle bracket supplied to the blank threaded hole in the front cross member. **(Pic 10)**

Using P clamps provided secure lines. **(Pic 11)**



**Pic 10**



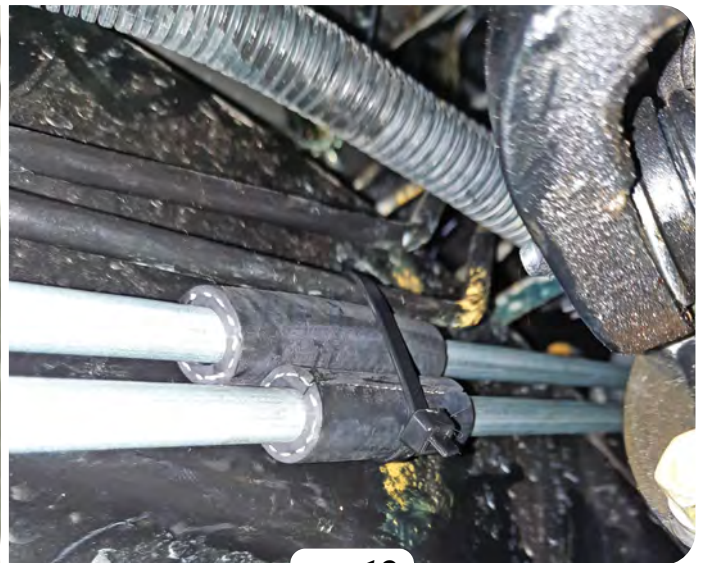
**Pic 11**

8. Check to make sure lines are not rubbing on any surface. **(Pic 12)**

Secure lines at this point with insulation hose and cable ties. **(Pic 13)**



**Pic 12**



**Pic 13**



9. Fit rubber hose supplied to steel pipes and route as shown. (Pic 14)  
Be sure to protect hoses with plastic conduit. (Pic 15)



**Pic 14**



**Pic 15**



**Pic 16**

10. Screw fittings to cooler (using two spanners so as not to damage the cooler) and mount cooler as shown using bolts provided. (Pic 16)

11. Cut hoses to size and fit to cooler with clamps provided. (Pic 17 and 18)



**Pic 17**



**Pic 18**



**Pic 19**

12. Mount horn as shown in the new position. (Pic 19)

- 13.** *Check all hoses and lines to ensure they are not rubbing.*
- 14.** *Check fluid level as per manufacturers specs.*
- 15.** *Test drive vehicle and check for any possible oil leaks.*
- 16.** *Recheck all lines and fittings to make sure they are secure.*
- 17.** *Reinstall all covers.*